

# **JACKSON** *Safety*

*Bringing style to the  
work place*



## **WELDING HELMET CATALOGUE 2009**



# INTRODUCTION

Jackson Products has been the leader in the technological development of safety products to the welding industry since 1932 setting revolutionary new thresholds in ADF, electrics and “smart” welding helmet design & materials. Premier brands include Jackson, Jackson Safety, Huntsman, and Lansec

Since 1994, Jackson Products has built an alliance of companies that provide superior quality personal protective products. Over seventy five years in the business has made us the market share leader in the welding and safety industry, offering a wide range of eye, head, face and respiratory protection products through the Jackson & Huntsman brands.

In November 2007 Jackson Products Limited acquired Safemaster Oy, a manufacturer of quality personal protective equipment, with famous brands such as the Albatross range and innovative PAPR designs expanding our extensive product portfolio further.

On 14th April 2009 Kimberly Clark acquired Jackson Safety Products Inc. The acquisition of Jackson Safety is consistent with Kimberly Clark’s global business plan strategy to accelerate growth of work place solutions drawing on a wealth of strengths including an outstanding product portfolio and a highly experienced sales force.

Every day one in four people around the world trust Kimberly Clark brands to enhance their health, hygiene and well being. Kimberly Clark have been producing high quality products for the last 137 years. Manufacturing companies depend on Kimberly Clark Professional for a broad portfolio of hygiene and safety products that help protect both their employees and the environment in which they work.

Our mission is to be the ultimate safety solution by becoming the worldwide leader in service and value in safety products and solutions with results exceeding the expectations and demands of our customers.

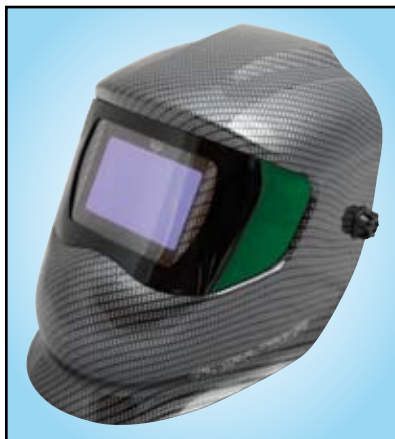
From new construction and metalworking with welding helmets to respiratory systems and protective eyewear every product offered by Jackson Safety will deliver long lasting value backed by our superior customer service. Regardless of industry, location or safety application workers doing their job can rest assured we’ve done ours. We are committed to providing quality merchandise in an efficient and timely manner to our valued customers. We are proud to serve your safety needs and appreciate your patronage.

## **Managing Director EMEA Statement**

Jackson Products Ltd. is the European headquarters for Jackson Safety and has it’s offices at Kingswinford, West Midlands, England. It specialises in developing, manufacturing and marketing high-quality products that protect the head, hands and eyesight of industrial users. In close collaboration with our customers and researchers we design products that meet the highest requirements for protection, durability and ergonomics with unique technologies. This approach has made us a market leader in our field.

Phil A Chew  
Managing Director EMEA

# TL MULTIVIEW



710C310 Carbon UVIR 5



710S310 Silver UVIR 5



70C310 Blank

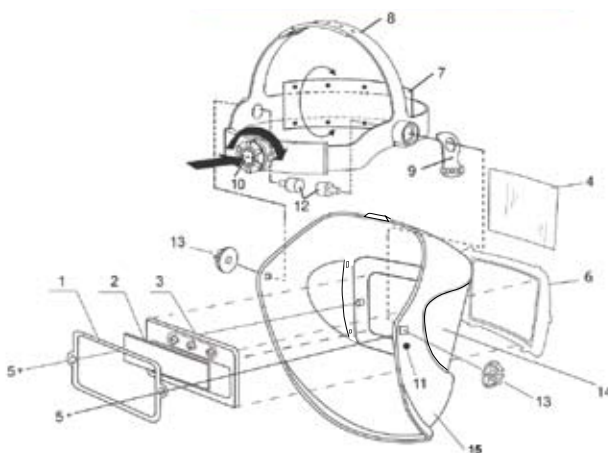


70S310 Blank

The TL Multiview brings a new concept to JP welding helmets offering UVIR 5 side windows which promote exceptional peripheral safety and vision. The TL Multiview is also available without side windows (blacked). This exclusive design incorporates traditional concepts and futuristic ideas making welding a more comfortable and safe process. The TL Multiview is specifically designed to incorporate breathable welding systems. The design allows the user to weld comfortably with a particulate welding mask or a Jackson designed Powered Air Purifying Respirator.

The helmet is CE approved to EN175S and benefits from a robust design, high quality graphics, screw in lens retainer and a new revolutionary high comfort fit headgear. The TL Multiview can be used with a range of different Jackson Safety ADF's from Twisted Nematic to Surface Mode technology.

## SPARES TL MULTIVIEW



1. Lens retainer 80104 passive
1. Lens retainer 80101 fixed shade
1. Lens retainer 80102 VS 2400
1. Lens retainer 80103 Surface mode
2. Inner protection lens 4701 360/2400
2. Inner protection lens 4704 370/390
2. Inner protection lens 4708 Glass
2. Inner protection lens 470805 Fixed
3. Welding filter 103213B
3. Welding filter 103215B
3. Welding filter 103968
3. Welding filter 103897C
3. Welding filter 103452C
3. Welding filter 103850C
3. Welding filter 103964C
4. Spatter lens 4700 MV
5. lens retaining screws 80100
6. Front frame 80202MV
7. Comfort band 9711SH
8. Headgear 4711MV
15. Side windows UVIR 5 (or Blank)

Items 9, 10, 11, 12, 13 & 14 not available as spare parts



# TL PREDATOR



80B310 Metallic Blue



80G310 Metallic Green



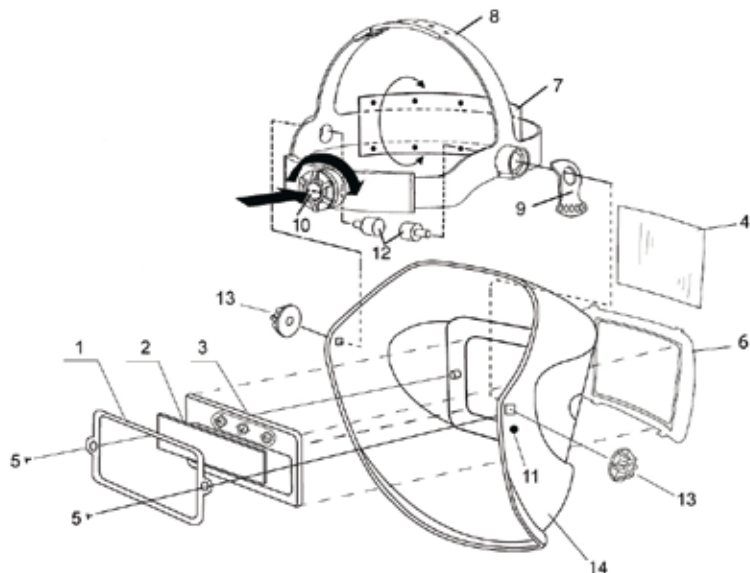
80S310 Metallic Silver



80MB310 Matt Black

Following the success of the Attitude Jackson Products has decided to further develop the Translight family adding the TL Predator, which is suitable for all Jackson Safety ADF's from Twisted Nematic to the patented Surface Mode technology. The helmet is CE approved to EN175 S and benefits from a robust design (almost indestructible in normal use). The TL Predator has a screw-in lens retainer for a more secure fastening. Unassembled versions come with the Surface Mode and Variable Shade retainer as standard (Other lens retainers are available on request).

The TL Predator comes in four colours as standard; Matt Black, Metallic Blue, Metallic Green and Metallic Silver all with superior paint and finish for long lasting good looks. The TL Predator is available in any colour subject to minimum order quantity of 500 units



## SPARES TL PREDATOR

1. Lens retainer 80104 passive	3. Welding filter 103897C
1. Lens retainer 80101 fixed shade	3. Welding filter 103452C
1. Lens retainer 80102 VS 2400	3. Welding filter 103850C
1. Lens retainer 80103 Surface mode	3. Welding filter 103964C
2. Inner protection lens 4701 360/2400	4. Spatter lens 4700
2. Inner protection lens 4704 370/390	5. lens retaining screws 80100
2. Inner protection lens 4708 Glass	6. Front frame 80202S
2. Inner protection lens 470805 Fixed	6. Front frame 80202B
3. Welding filter 103213B	6. Front frame 80202GB
3. Welding filter 103215B	7. Comfort band 9711SH
3. Welding filter 103968	8. Headgear 4711S

Items 9, 10, 11, 12, 13 & 14 not available as spare parts

Safemaster Oy has manufactured Albatross Welding Helmets since 1994. Various models have been tested and certified with different blower units and for safety helmets. Safemaster Oy is a member of the Association of Finnish Suppliers of Labour Safety Equipment.



**Albatross 2000** series has patented eyesight lid with 90x110 DIN2 UV-filter and 60x110 DIN9 welding filter. There are 4 different models in this series.

Type Head gear model with eye sight lid  
 Hatch Opening lid with 60x110mm welding filter  
 Frame Fireproof thermoplastic, frost proof up to -40° C  
 Weight 385g Certificate CE

**Albatross 4000** Head gear model with 90x110 welding filter with flip-up lid

Type Head gear model with 90 x 110 welding filter  
 Hatch Flip-up lid  
 Weight 350 g Certificate CE

**Albatross 5000** Heatweld series has good thermal resistance, up to 250° C and has a green flip-up lid with 60x110 welding filter.

Type Head gear model with 60x110 mm welding filter  
 Hatch Green flip-up lid  
 Weight 420 g Certificate CE

**Albatross Basic-series** welding helmets have black 60x110 DIN10 welding filter. There are 4 different models in this basic series.

Type Head gear model with 60x110 mm welding filter  
 Hatch Flip-up lid  
 Frame Thermoplast, frost proof up to -30° C  
 Weight 375g Certificate CE

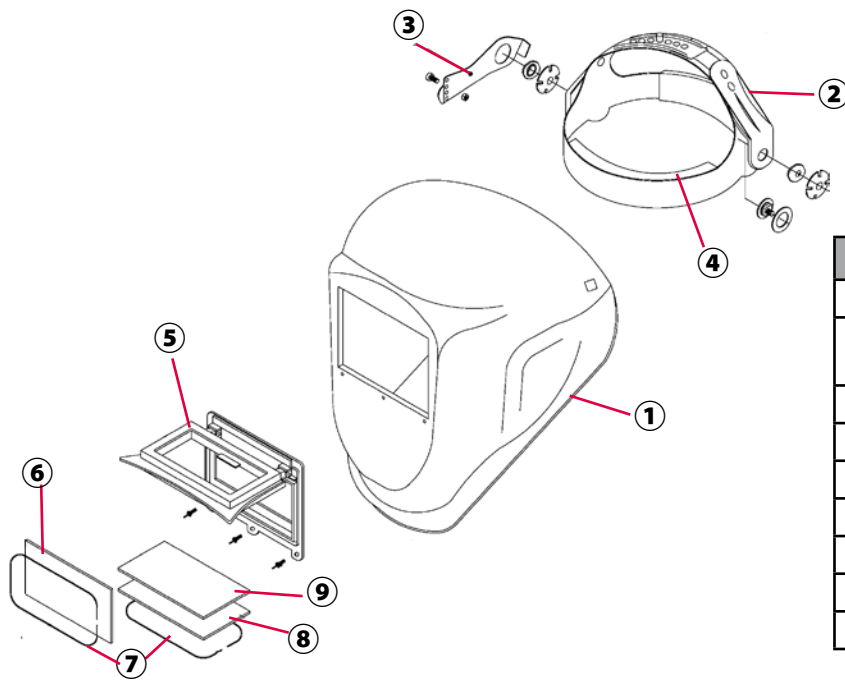
**Albatross X 7000** is a visor model helmet with Euro dimensions 90x110mm welding filter. There is large polycarbonate grinding lens under the flip-up visor. A large viewing area helps the user to see their surroundings better. Available with many different Jackson ADF's. Features of different automatic welding filters can be found in the spare parts and accessories section.

Albatross X-series is CE certified with EN 175 B standards (protection against high speed particles, medium energy impacts 120 m/s).

Albatross X 7100 can be used with all Jackson 110 x 90mm automatic welding filters.

Type Head gear model with welding visor  
 Visor Thermo plastic, equipped with 90mm x 110mm welding filter  
 Internal cover glass 160mm x 180mm in the frame  
 Cover glass 90mm x 110mm in the visor  
 Frame Thermo plastic  
 Weight 540g  
 Certificate EN 175 B

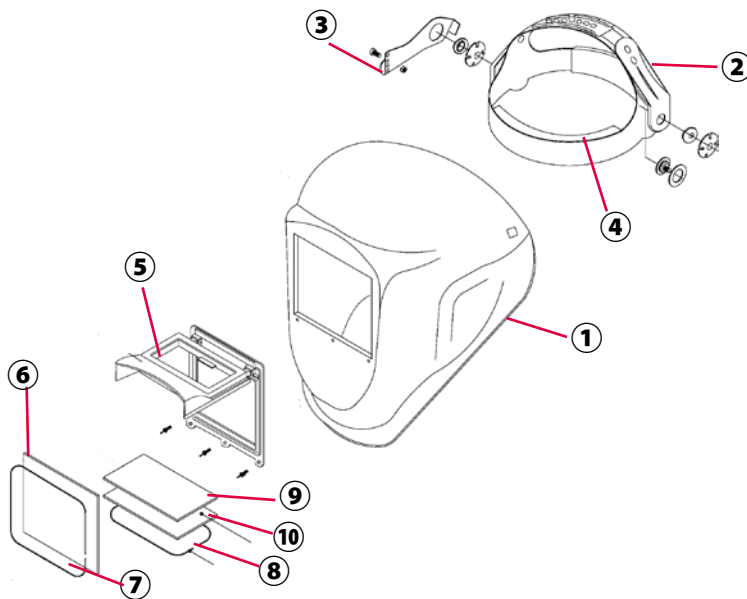
## ASSEMBLY AND SPARE PARTS ALBATROSS BASIC



### SPARES BASIC

No.	Description	Part Number
1	Helmet shell	Not available
2	Headgear, black incl. bolts, nuts and rake adjustment	104
3	Hinge set for headgear	105
4	Comfort band	1070
5	Front frame 60x110, black	101
7	Spring 60x110mm (2 required)	1031
6	Inner Protection Lens 60x110	102
8	Outer Protection Lens 60x110	102
9	Mineral Glass Welding Filter 60x110	10310

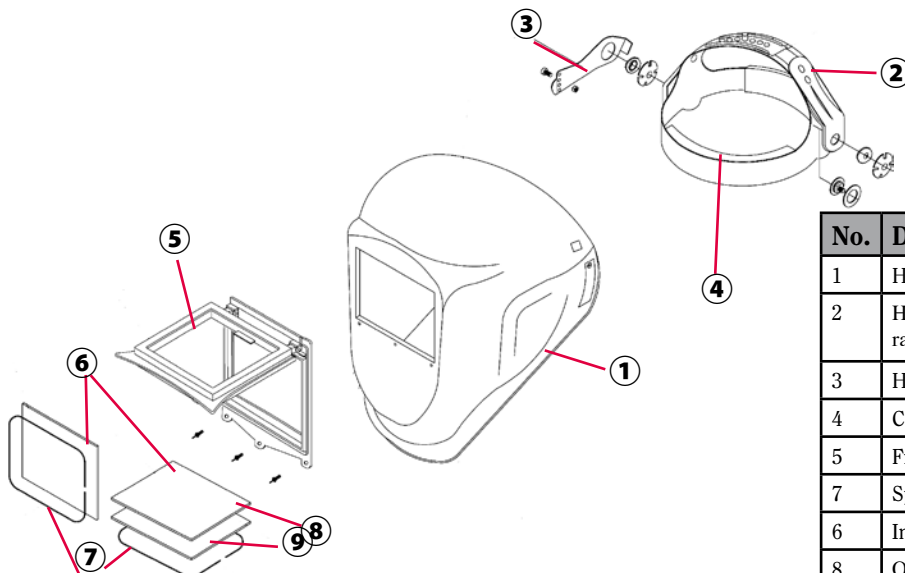
## ASSEMBLY AND SPARE PARTS ALBATROSS 2000



### SPARES 2000

No.	Description	Part Number
1	Helmet shell	Not available
2	Headgear, black incl. bolts, nuts and rake adjustment	104
3	Hinge set for headgear	105
4	Comfort band	1070
5	Front frame black	2101
7	Spring 90x110mm (1 required)	2107
8	Spring 60x110mm (1 required)	1031
6	Inner Protection Lens 90x110 DIN2	2102
9	Outer Protection Lens 60x110	102
10	Mineral Glass Welding Filter 60x110	10310

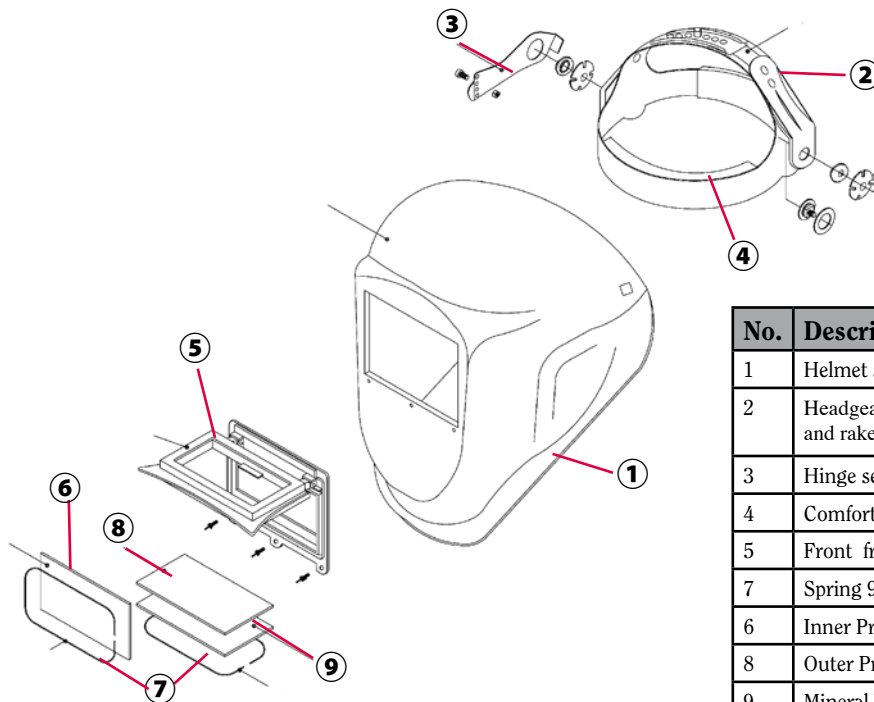
## ASSEMBLY AND SPARE PARTS ALBATROSS 4000



### SPARES 4000

No.	Description	Part Number
1	Helmet shell	Not available
2	Headgear, black incl. bolts, nuts and rake adjustment	104
3	Hinge set for headgear	105
4	Comfort band	1070
5	Front frame 90x110, black	4101
7	Spring 90x110mm (2 required)	2107
6	Inner Protection Lens 90x110	4102
8	Outer Protection Lens 60x110	4102

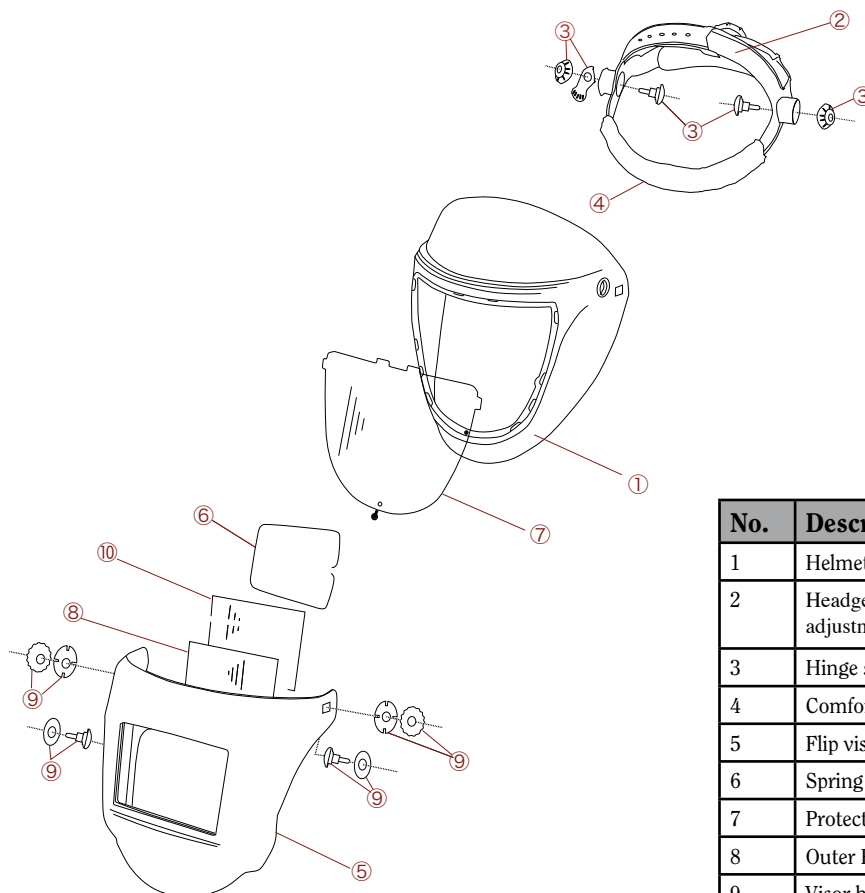
## ASSEMBLY AND SPARE PARTS ALBATROSS 5000



### SPARES 5000

No.	Description	Part Number
1	Helmet shell	Not available
2	Headgear, black incl. bolts, nuts, and rake adjustment	104
3	Hinge set for headgear	105
4	Comfort band	1070
5	Front frame 60x110, Green	4101
7	Spring 90x110mm (1 required)	1031
6	Inner Protection Lens 90x110	102
8	Outer Protection Lens 60x110	102
9	Mineral Welding Filter 60x110	10310

## ASSEMBLY AND SPARE PARTS ALBATROSS 7000



### SPARES 7000

No.	Description	Part Number
1	Helmet shell	Not available
2	Headgear, black incl. bolts, nuts and rake adjustment	104
3	Hinge set for headgear	105
4	Comfort band	1070
5	Flip visor 90x110, grey	7101
6	Spring 90x110mm (1 required)	2107
7	Protection Lens 160x180, clear	7102
8	Outer Protection Lens 90x110	4102
9	Visor hinge set	10510
10	Mineral Glass filter 90x110	4109

# translight



10310

EN 166 EN 175

The Translight 2000 welding helmet remains at the foundation of all the Jackson Products European helmet range. This long running helmet has been the flag ship for nine years from January 2000 until the present day. The Translight 2000 is an extremely light and comfortable welding helmet, which reduces welder's fatigue, with an ergonomic design maximizing productivity. It is robust, durable and produced from flexible materials for endurance and offers excellent front and side protection from spatter and radiation. The Translight 2000 can be used with a range of different Jackson mineral glasses and ADF's from Twisted Nematic to Surface Mode technology. It comes with a 12 month manufacturer's warranty.

# SCORPION



4100HUNT

EN 379 EN 175



The Scorpion welding helmet is based on the Translight design, conferring all the benefits and advantages of this helmet. This ADF is powered by Twisted Nematic technology that increases productivity, enhances safety and improves quality. The Scorpion has external shade variation DIN 4/9-13, allowing the user to adjust the shade with ease whilst wearing the welding helmet, internal sensitivity adjustment and delay adjustment to maximise performance. The Scorpion operates on two independent sensors ensuring continuous detection of the welding arc at all times. It is suitable for all Arc welding applications, MIG/MAG & TIG > 20 Amps and comes with a 12 month manufacturer's warranty.

# STORM



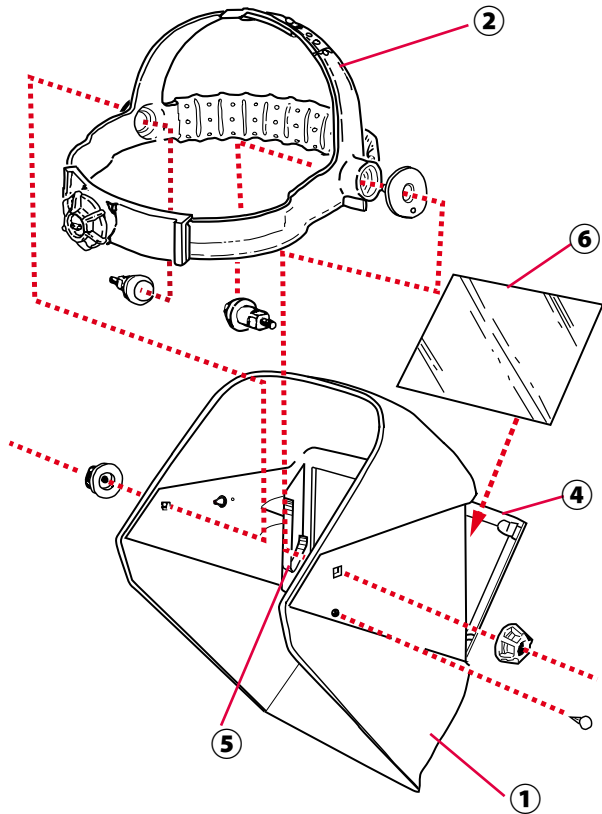
5000STORM Variable  
5011STORM Fixed SH 11  
EN 379 EN 175



The Storm welding helmet is based on the well known Translight 2000, conferring all the benefits and advantages of this helmet. The Storm is available with a variable or fixed shade filter. The ADF's are powered by Twisted Nematic technology and operate by two independent sensors. The variable filter has external shade variation DIN 4/9-13 (allowing the welder to adjust the shade with ease while in use) and internal sensitivity adjustment (high-low). The fixed shade Storm ADF is available in 4/11 DIN with an internal sensitivity adjustment (high-low). The Storm is suitable for all Arc welding, MIG/MAG & TIG > 30 Amps and it comes with a 12 month manufacturer's warranty.



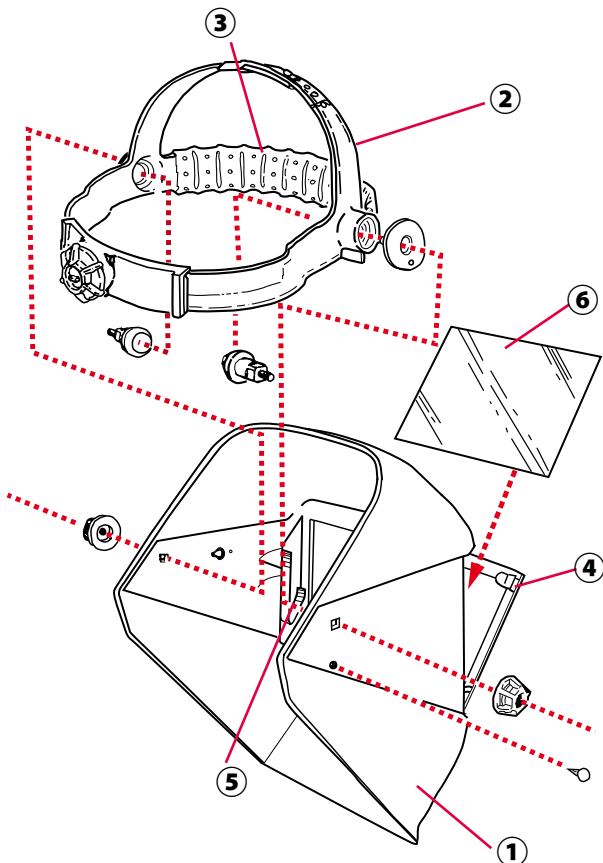
## ASSEMBLY & SPARE PARTS FOR TRANSLIGHT.



No.	Description	Part No
1	Helmet Shell	Not available
2	Headgear, black, incl. bolts, nuts and rake adjustment	4711S
3	Comfort band	9711SH
4	Front frame, black	10200
5	Spring 4-16 mm, Translight (2 required)	10100
*	Batteries AAA (Alkaline)	10150
*	Inner protection lens 360/2400	4701
*	Inner protection lens 370/390	4704
*	Inner protection lens Glass	4708
*	Inner protection lens Fixed Shade	470805
6	Outer protection lens	4700

\* Not shown

## ASSEMBLY & SPARE PARTS FOR SCORPION & STORM



No.	Description	Part No
1	Helmet Shell	Not available
2	Headgear, black, incl. bolts, nuts and rake adjustment	4711S
3	Comfort band	9711SH
4	Front frame, black	10200
5	Spring 4-16 mm, Translight (2 required)	10100
6	Outer protection lens	4700

# SHADOW™



3002498

Shadow welding helmets are the best selling helmet on the USA market. The narrow design is perfect for work in tight spaces and the extended front increases neck protection against sparks, slag and fumes. The Shadow helmet can withstand radiant heat of 350°F (177°C) which is a minimum of 50% improvement over most other Thermoplastic shells. Normal Shadow HSL's are available in 3 colours; black, blue and red and in two different models; HSL 100 with a viewing area of 4 ½" x 5 ¼ " & HSL 2 with 2" x 4 ¼" flip-up. The Shadow welding helmet has a weight of only 386 grams and is certified to EN169.

The Shadow welding helmet can be used with a range of different Jackson Safety mineral glasses and ADF's from Twisted Nematic to Surface Mode technology and comes with a 12 month manufacturer's warranty.

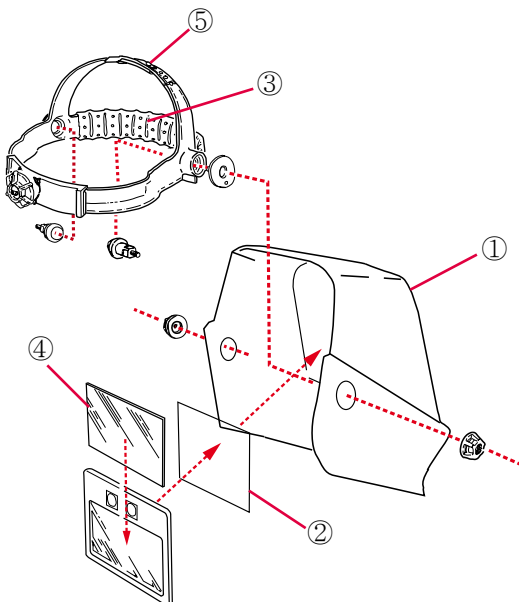
# HALO X



3013594 Flame Red

The HaloX is a lightweight welding helmet based on the Shadow HSL design, produced from Hydrafelx™ with Duralogic™ high index metallic paint. This helmet is extremely flexible, durable and it's ergonomic design reduces neck tension and welder's fatigue. This helmet can be supplied with a Jackson Safety mineral glass or ADF (from Surface Mode to Twisted Nematic) and can be easily adapted onto a hard hat. The HaloX comes with a viewing area of 90x110mm or 4.5" x 5.25", weighing just 170 grams. It is certified to EN175 and comes with a 12 month manufacturer's warranty.

## ASSEMBLY & SPARE PARTS SHADOW HALO X

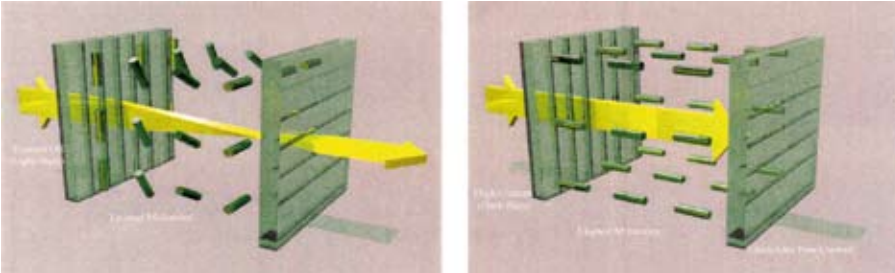


No.	Description	Part No
1	Helmet Shell	Not available
4	Inner lens 51 x 108	4701
4	Inner lens 66 x 110	4704
2	Outer protection lens 4.5 x 5.25"	3002760
4	Inner lens for Boss	3015039
4	Inner lens for NexGen	3002739
5	270-S headgear	3002669
3	Sweatband, cloth	3002665
Not Shown	Light seal gasket	3004736
Not Shown	Retainer spring	3002648
Not Shown	Batteries AAA (Alkaline) (min 10 pcs.)	3002672

# AUTOMATIC WELDING FILTERS

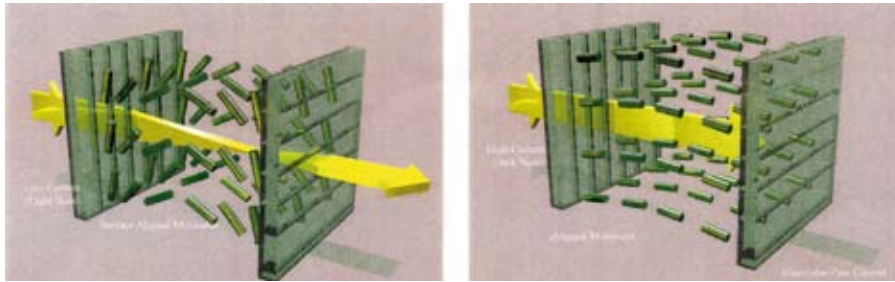
## **SINGLE OR DUAL TWISTED NEMATIC**

Twisted nematic liquid crystal display molecules in the light state are parallel to the display's outer surfaces. When the high voltage pulse is applied the molecules rotate a full 90 degrees.



## **SURFACE MODE**

In the light state of a surface mode liquid crystal display, only the liquid crystal molecules at the outside surfaces are at rest with their long axis parallel to the display's outer surfaces. The liquid crystal at the centre of the display is aligned perpendicular to the outside display surfaces. When the high voltage pulse is applied, only the molecules near the surface need to rotate the full 90 degrees as the filter switches. Therefore, the switching speed is much faster.



All Jackson ADF's (with the exception of the 370) come with True Colour Band Pas, allowing the welder to see the true colours of the molten metal and LED lights whilst welding.



## **360** (Part No.103897C)

This is a battery-powered ADF (2x AAA batteries) with a switching speed of 0.04ms! Using Jackson's patented Surface Mode technology, the 360 has variable delay adjustment and variable sensitivity allowing the user to set the filter to gain maximum performance. This ADF has True Colour definition with a viewing area 98 x 40mm and has 2 independent sensors. It has a variable shade 3/9/-2 DIN and is suitable for all Arc welding applications including TIG >10 Amps.

This filter is certified to CE EN 379 and comes with 2 years manufacturer's warranty



## **370** (Part No. 103452C)

The 370 is the only ADF made by Jackson without True Colour. It uses Surface Mode technology, two independent sensors and a switching speed of 0.04 ms! It has variable delay adjustment & variable sensitivity allowing the user to set the filter to gain maximum performance. The 370 ADF has a viewing area 98 x 60mm & variable shade 3/9-12 DIN. Suitable for all Arc welding applications and TIG welding applications >10 Amps.

This filter is certified to CE EN 379 and comes with 2 years manufacturer's warranty.



### **390** (Part No. 103850C)

This is a battery-powered unit (2x AAA batteries) with a switching speed of 0.04ms using Jackson's Surface Mode technology. It has variable delay adjustment & variable sensitivity allowing the user to set the filter to gain maximum performance. True colour definition with a viewing area 98x60mm variable shade 3 / 9-12 DIN. Suitable for all Arc welding applications and TIG welding applications >10 Amps

This filter is certified to EN 379 and comes with 2 years manufacturer's warranty.



### **2130/2131/2132** (Part Nos. 103213B, 103215B, 103217B)

These are solar powered ADFs with a switching speed of 0.8 ms using Twisted Nematic technology & adjustable sensitivity (High-Low). They have True Colour definition with a viewing area of 98x40mm. Shades available are 3/10 DIN, 3/11 DIN and 4/12 DIN. Suitable for all Arc welding applications with the exception of TIG.

All ADF's are certified EN 379 and come with 2 years manufacturer's warranty.



### **2400** (Part No. 103968)

This is a "Solar" powered ADF with a switching speed of 0.4 ms using dual Twisted Nematic technology with three independent sensors and a viewing area of 98x40mm. This ADF has internal shade adjustment 4-9/13 and has additional sensitivity and delay adjustment. It also has True Colour definition. Suitable for all Arc welding applications and TIG welding applications >15 Amps. This ADF is certified to EN 379 and comes with 2 years manufacturer's warranty.



### **Triple 3N1** (Part No. 103964C)

This ADF is versatile and offers three functions in one; Weld (9-12), Grind (5), Cut mode (3) all with a switching speed of 0.04ms! Sensitivity and delay adjustments allow the user to adjust lens settings depending on the work environment and process. Variable shade 4/9-12. Intellisense technology allows unit to detect welds less than 5 Amps ideal for low amp TIG. With two independent sensors, the 110x90 mm cartridge fits all of the Jackson European welding helmets.

This ADF is certified to CE EN 379 and comes with 2 years manufacturer's warranty.

# NexGen™

(Part No. 3004384)



The NexGen has dual power from 2 x 3v Li-Ion batteries and solar cells and is based on the 3N1 Technology. It allows 3 modes of operation; weld, grind, or torch with a switching speed of 0.04ms! Intellisense technology allows this unit to detect welds less than 5 Amps. 4 independent, redundant sensors. SmartView LCD screen and soft touch control panel. ClimaSensor Technology registers the ambient temperature, to ensure a true shade in extreme temperatures and EMI coating protects electronics from extreme electromagnetic interference. Variable shade 4–9/13, variable sensitivity and delay adjustments. Replaceable Li-Ion batteries and low battery indicator, viewing area of 98x 60 mm. Versatile cartridge fits most 4.5”x 5.25” vertical windows.

This ADF is certified to CE EN 379 and comes with 2 years manufacturer’s warranty.



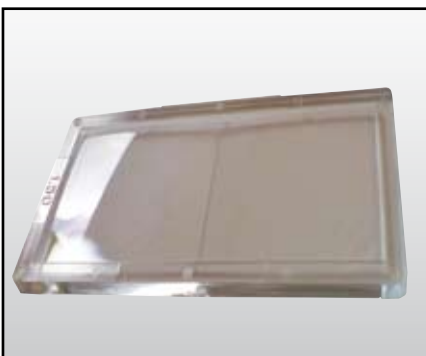
(Part No. 3014753)



The Boss is a battery-powered ADF (2 x AAA batteries) and has the largest viewing area in the industry of 13 ins<sup>2</sup> (85.26 cm<sup>2</sup>) for optimal viewing area. Versatile 3N1 Weld (9-12), Grind (5), Cut mode (3) with a switching speed of 0.04ms! Sensitivity and delay adjustments allow the user to adjust lens settings depending on the work environment and process. Variable shade 4/ 9-12. Amber view lens gives user greater visibility of weld with less strain on the eye. Intellisense technology allows unit to detect welds less than 5 Amps and is ideal for low Amp TIG. Two independent sensors. 4 ½” x 5 ¼” cartridge fits Shadow and Halo X helmets.

This ADF is certified to CE EN 379 and comes with 2 years manufacturer’s warranty.

## Magnification Lenses



Should you need eye correction you can use our range of magnification lenses; simply remove the existing inside protection lens from the majority of our ADF’s and insert the correct lens to suit your need. It comes in one size only: 2”x4.25” (a special ADF adapter may be needed for some of our ADF’s).

Part No.	Description	Stength D
3002741	MAG LENS 98	+1.00 D
3002742	MAG LENS 98	+1.25 D
3002743	MAG LENS 98	+1.50 D
3002744	MAG LENS 98	+1.75 D
3002745	MAG LENS 98	+2.00 D
3002747	MAG LENS 98	+2.50 D

## POWERED AIR RESPIRATORY SYSTEMS

Welding is not only damaging to the eyes and face but also causes damage to the respiratory system, lungs and central nervous system with the emissions and particles it generates. These dangers are often overlooked. The safety of the employee should not be seen as a cost factor, but as a necessary investment.

Jackson Products Ltd offers a highly efficient range of protection against environmental contaminants, such as dust, aerosols, particulates and fumes. The unit is lightweight and competes very well against other conventional systems for wearer comfort. Our portable unit provides a constant steady flow of fresh air thus reducing discomfort from increased air pressure or unclean air. The head unit design also allows the user to wear glasses or protective eyewear. Our unit comes complete with a removable Li-Ion battery and replaceable P3 filters. The unit is evenly balanced on the belt to allow full movement and maximise comfort for the wearer and has an acoustic alarm system that warns the user if the airflow rate drops below the minimum air flow level, thus alerting the operator to ineffective performance from the unit.

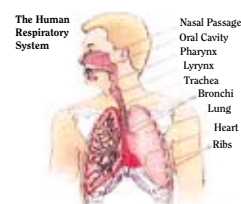
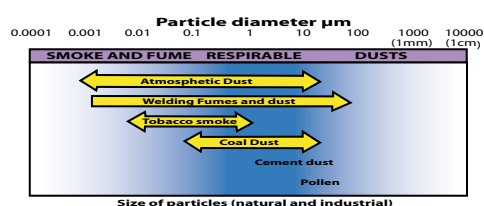
### Welding & Particulate Fumes

#### What is welding fume?

Welding fume is a mixture of airborne particles.

More than 90% of the fume arises from vaporisation of the consumable electrode, wire or rod as material is transferred across the arc or flame. The range of welding particles size is shown in relation to the more familiar types of dust and fume in the diagram above. The

Respirable fraction of particles (especially less than  $3\mu\text{m}$ ) are potentially the more harmful as they can penetrate to the innermost parts of the lungs.



# AIRMAX

BY JACKSON SAFETY

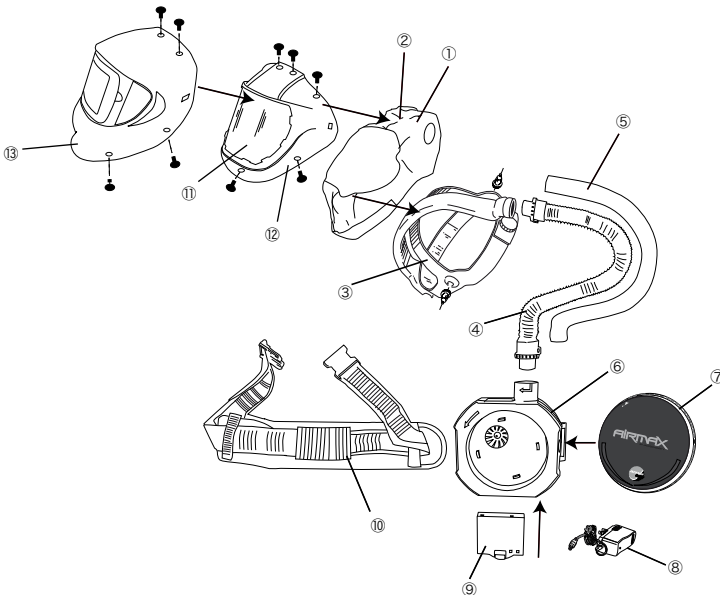


The Airmax is the latest respiratory system to come from the Jackson Products family. We have taken all the great features from our existing PAPR (Powered Air respiratory systems) and added to them. The Airmax comes with the following features:

- TH2PSL filter (see filter selection guide)
- Light weight; only 936gm including PSL
- Flow rate 180 litres per minute for 9 hours (test units have run for more than 12 hours)
- Proban covered belt and hose as standard for prolonged life
- Quality ABS plastics are strong and durable for the everyday strain of the workplace
- Removable Li-Ion battery allowing option of two batteries for longer continuous use
- Rugged construction again to handle the every day workplace environment
- Recessed ON/OFF switch to reduce the risk of the unit being switched off accidentally
- PSL filter design maximizes filtration surface and comes with a built in spark deflector
- Unique bayonet coupling ensures the perfect connection
- Charge time of only 4 hours
- Louder acoustic alarm to alert user of potential problems
- 12 months warranty on blower. 6 months warranty on battery.
- Conforms to CE EN12941 TH2P

PLEASE NOTE: Our PAPR systems must be used in environments where the oxygen level is not below 17% and where there is sufficient ventilation.

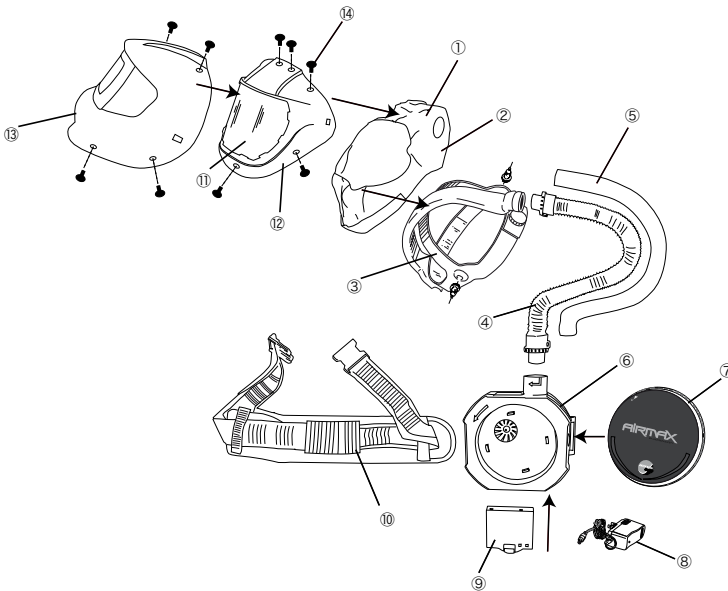
## TL PREDATOR AIRMAX ASSEMBLY & SPARES



### Airmax Spare Parts for TL Predator

Description	Part Number
1 - Face Seal S Version	68490
2 - Face Seal V Version	68615
3 - Head Gear	680033
4 - Air Hose	68496
5 - Proban Hose Cover	68495
6 - Motor Unit	68000
7 - Filter	68802
8 - Battery Charger	68503
9 - Battery	68808
10 - Waist Belt	68801
11 - Clear Visor TLV	69617
12 - TLV Faceshield	690014
13 - TL Predator Blue "S"	6880B310
13 - TL Predator Silver "S"	6880S310
13 - TL Predator Matt Black "S"	6880MB310
13 - TL Predator Green "S"	6880C310
13 - TL Predator Blue "V"	6980B310
13 - TL Predator Silver "V"	6980S310
13 - TL Predator Matt Black "V"	6980MB310
13 - TL Predator Green "V"	6980G310

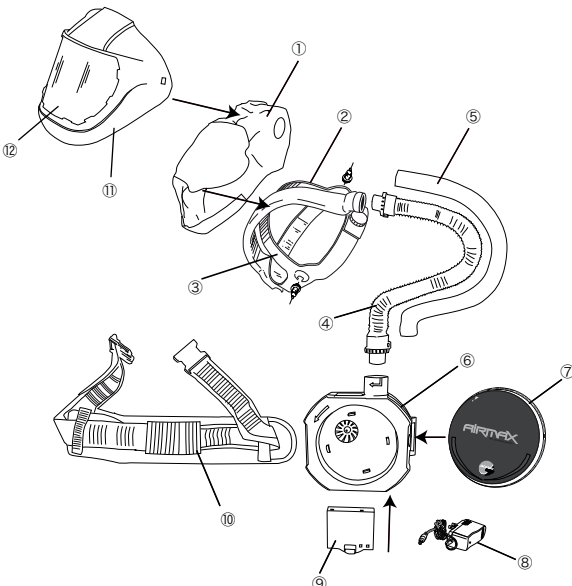
## TL MULTIVIEW AIRMAX ASSEMBLY & SPARES



### Airmax Spare Parts for TL Multiview

Description	Part Number
1 - Face Seal S Version	68490MV
2 - Face Seal V Version	68615
3 - Head Gear	680033
4 - Air Hose	68496
5 - Proban Hose Cover	68495
6 - Motor Unit	68000
7 - Filter	68802
8 - Battery Charger	68503
9 - Battery	68808
10 - Waist Belt	68801
11 - Clear Visor TLV	69617
12 - TLV Faceshield	690014
13 - TL Multiview Silver Blank "S"	68700S310
13 - TL Multiview Carbon Blank "S"	68700C310
13 - TL Multiview Silver UV IR 5 "S"	69710S310
13 - TL Multiview Carbon UV IR 5 "S"	68710C310
13 - TL Multiview Silver Blank "V"	68700S310
13 - TL Multiview Carbon Blank "V"	69700C310
13 - TL Multiview Silver UV IR "V"	69710S310
13 - TL Multiview Carbon UV IR "V"	69710C310

## TL CLEAR VISOR AIRMAX ASSEMBLY & SPARES



### Airmax Spare Parts for V Clear Visor

Description	Part Number
1 - Face Seal V version	68615
2 - Air Duct	Not available
3 - Head Gear	680033
4 - Air Hose	68496
5 - Proban Hose Cover	68495
6 - Motor Unit	68000
7 - Filter	68802
8 - Charger Adaptor	68503
9 - Battery	68808
10 - Waist Belt	68801
11 - TLV Faceshield	690014
12 - Clear Visor V	69617

### Airmax Protection Factor Table:

BLOWER UNIT	HEAD TOP	FILTER	CLASS
Airmax	TL Predator	Airmax PSL filter	TH2P
Airmax	TL Multiview	Airmax PSL filter	TH2P
Airmax	V Grinding Visor	Airmax PSL filter	TH2P

# **Jackson Products Ltd**

**Unit 10, Gibbons Industrial Park  
Dudley Road  
Kingswinford  
West Midlands  
DY6 8XF  
ENGLAND**

**Tel: +44 (0) 1384 286190**

**Fax: +44 (0) 1384 286197**

**E-mail: [info@jacksonproducts.co.uk](mailto:info@jacksonproducts.co.uk)**

**Website: [www.jacksonproducts.co.uk](http://www.jacksonproducts.co.uk)**



**A Product of Jackson Safety  
a division of  
Kimberly-Clark Professional**